



Elegant 19th century Master house,
with garden, in a small town.

193 830 €

225 sqm

11 rooms

Azerables La Souterraine



Surface	225.00 sqm
Plot size	1454 sqm
Rooms	11
Bedroom	9
Nb. bathrooms	1
Bathroom	1
Nb. WC	3 Independent
Property tax	788 €/an

Reference 896 Accomodation size : 225 m2

Bedrooms : 9

Land : 1 454 m2

The perfect house for opening a Chambre d'Hotes, or just a large family home.

This character house is located in a small and peaceful town, with some shops, close to La Souterraine.

It was restored in 2009. It is connected to mains drainage. The roof and walls are in very good condition, and it is ready to move in. There's a gas central heating, with an underground tank, and a pellet stove. PVC double glazing.

The accomodation comprises, on groundfloor : an entrance hall, an office room, a wc, a 14 m2 equiped kitchen, a 7.5 m2 utility room, a 45 m2 lounge, very bright and airy, with the stove and French doors to the garden,. A 14 m2 bedroom, a heating room, a 23 m2 storage room (the old corridor to a chapel, which has been walled).

On first floor, a landing, 4 bedrooms (17, 12, 15 and 11 m2), a shower room, a wc.

On second floor, a landing, a 11 m2 bathroom, 4 bedrooms about 12 m2 each, a wc.

Each bedroom has a washbasing.

Outside, there's an gated garden, with some old trees, and view over an old chapel and on former religious buildings, of which the house was part of.

Some shops and a medical center at walking distance.

La Souterraine, with its big shops (supermarkets), amenities and services, as well as its train station (Limoges-Paris) is 10 mn drive.

The A20 motorway is 5 mn drive.

Mandate N° 896. Price including 6.5% TTC agency fees to be paid by the buyer. Price excluding agency fees 182 000 €. Our fees : <http://www.immo-creuse-berry.com/honoraires>



Attegia immobilier

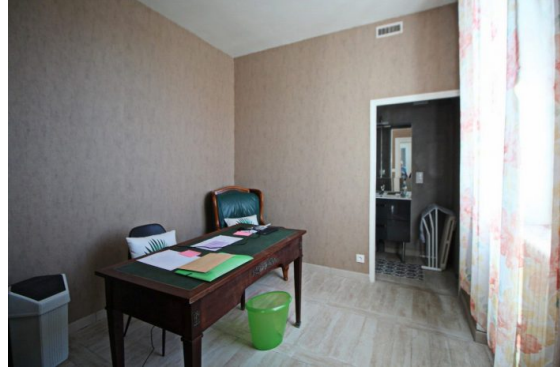
1 Place St Pierre

23270 Châtelus-Malvaleix

www.immo-creuse-berry.com

infos@immo-creuse.com

05 87 56 11 80



sarl au capital de 100 € • SIRET 502355258 • TVA FR66502355258 • Carte pro 2301 2018 000 029 818, délivrée par CCI Creuse • Caisse de garantie Galian 89 rue de la Boétie 75008 Paris d' un montant de 120000 € 1 • N° RCP 120137405 auprès de MMA entreprise 14 bd Marie et Alexandre Oyon 72030 Le Mans Cedex 9
Document non contractuel